

innovaphone

anynode[®]

The Software SBC

INNOVAPHONE CONNECT 2022

CREATE SOLUTIONS WITH ANYNODE



CERTIFIED FOR
MICROSOFT PHONE
SYSTEM DIRECT ROUTING



CERTIFIED FOR
ZOOM PHONE

[ANYNODESBC.COM](https://anynodesbc.com)

[@ANYNODESBC](https://twitter.com/ANYNODESBC)

SCALEABLE

FROM 2 TO 2000 SESSIONS PER SERVER

HIGH AVAILABILITY

PROVIDES A CONTINEOUS SYSTEM UPTIME
WITH EFFECTIVE FAILOVER

NATIVE

WINDOWS AND LINUX APPLICATION

EASY TO INSTALL

PREDEFINED PBX AND PROVIDER TEMPLATES

CERTIFIED

FOR MICROSOFT DIRECT ROUTING
AND ZOOM PHONE BRING YOUR OWN CARRIER (BYOC)

POWERFUL

MONITORING AND DIAGNOSTIC TOOL

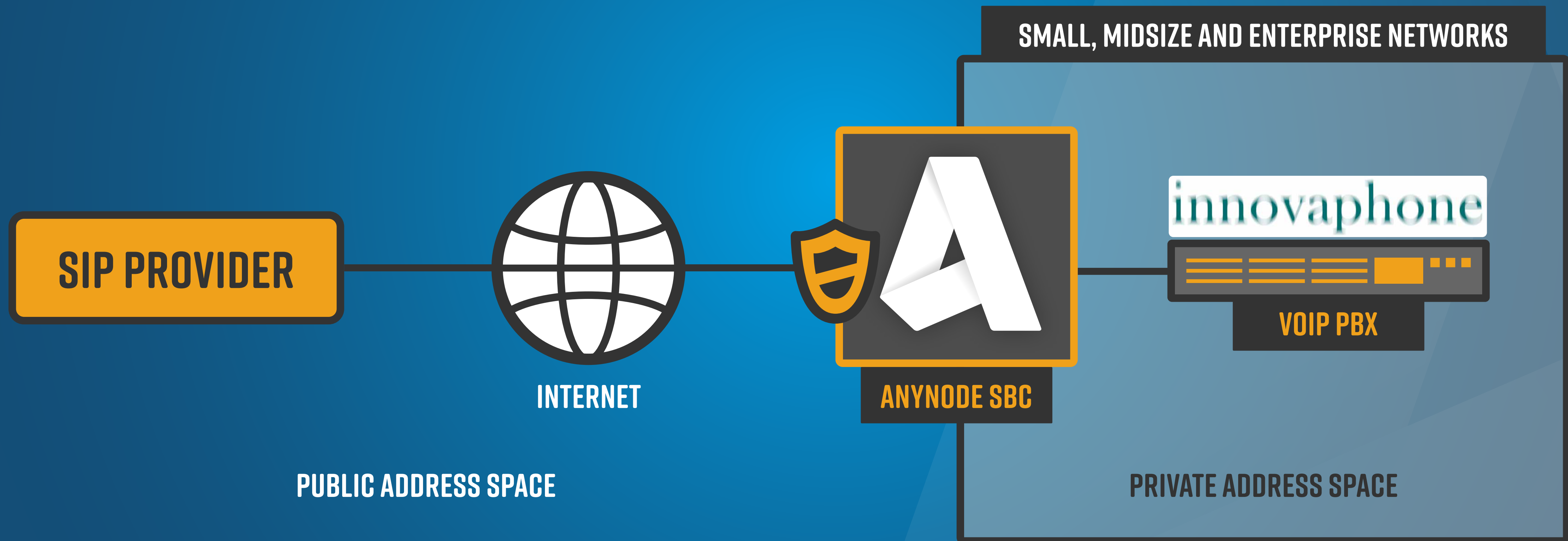
FULL INTEGRATION

MICROSOFT TEAMS, ZOOM PHONE
AND SKYPE FOR BUSINESS

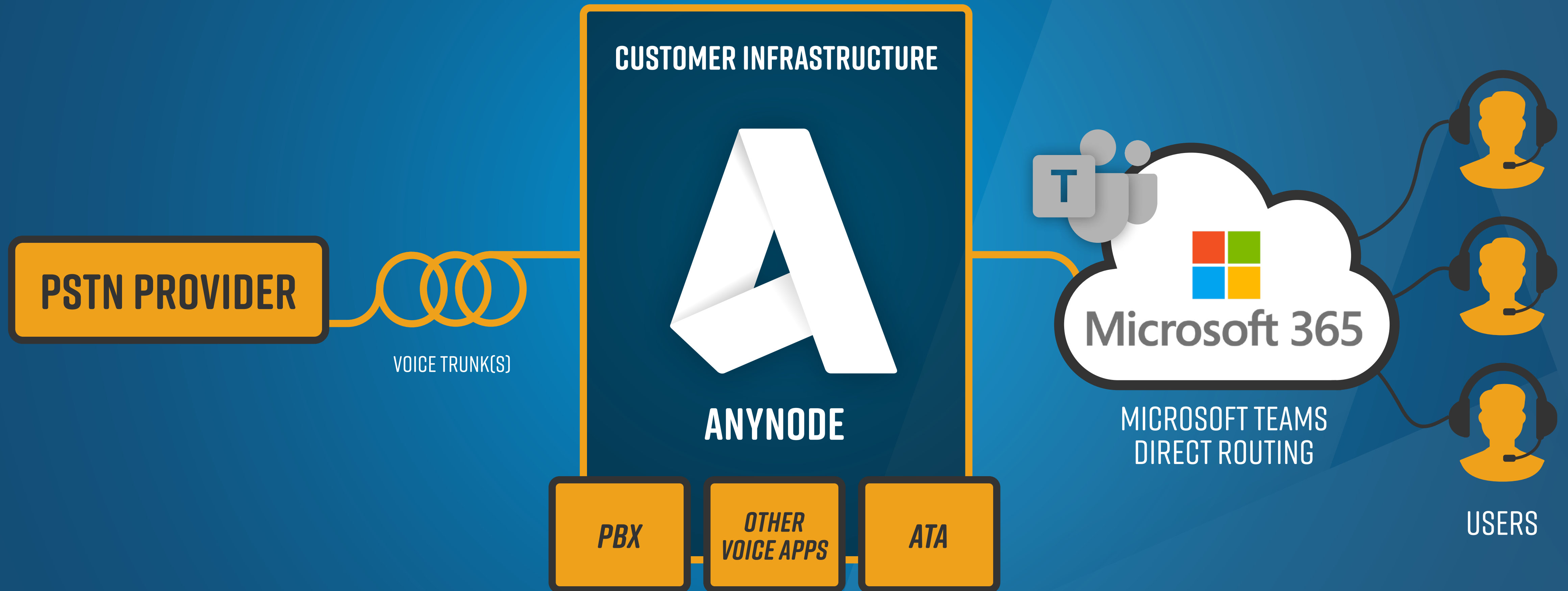
UNIFIED

SUPPORT OF MULTIPLE SIP TRUNKS
TO PROVIDERS OR PBX

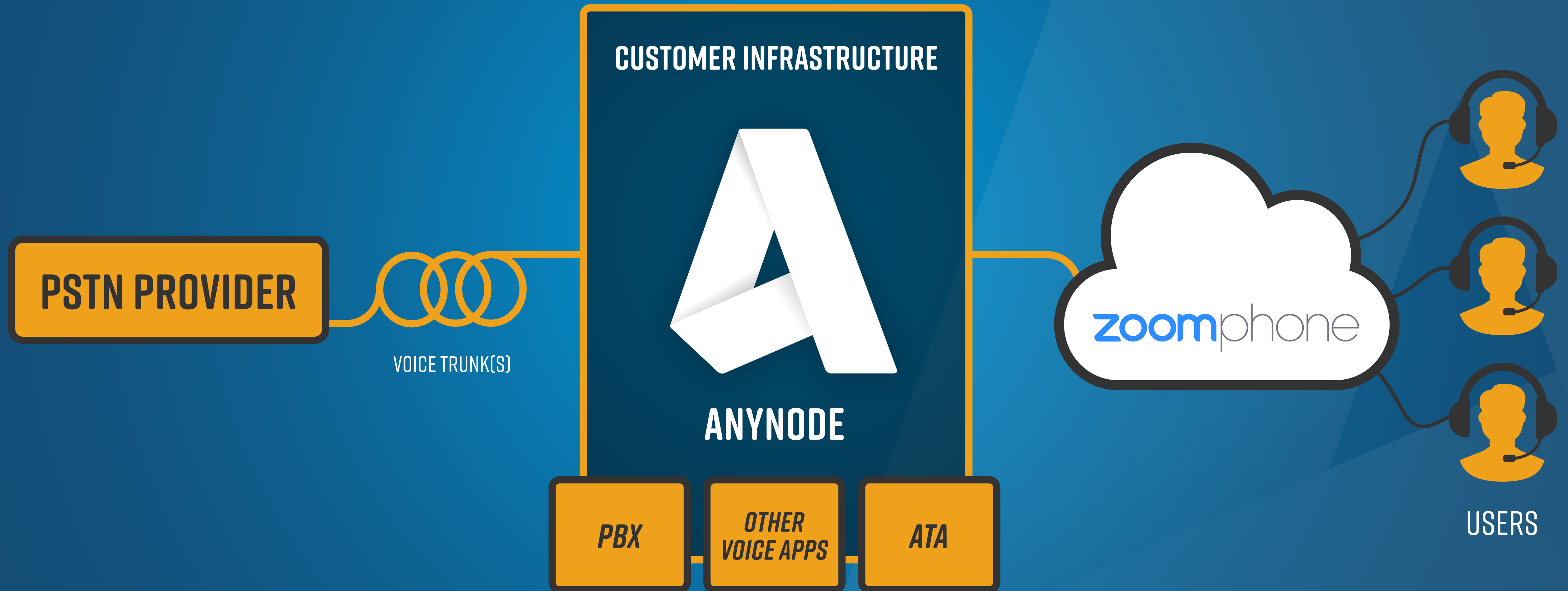
SESSION BORDER CONTROLLER



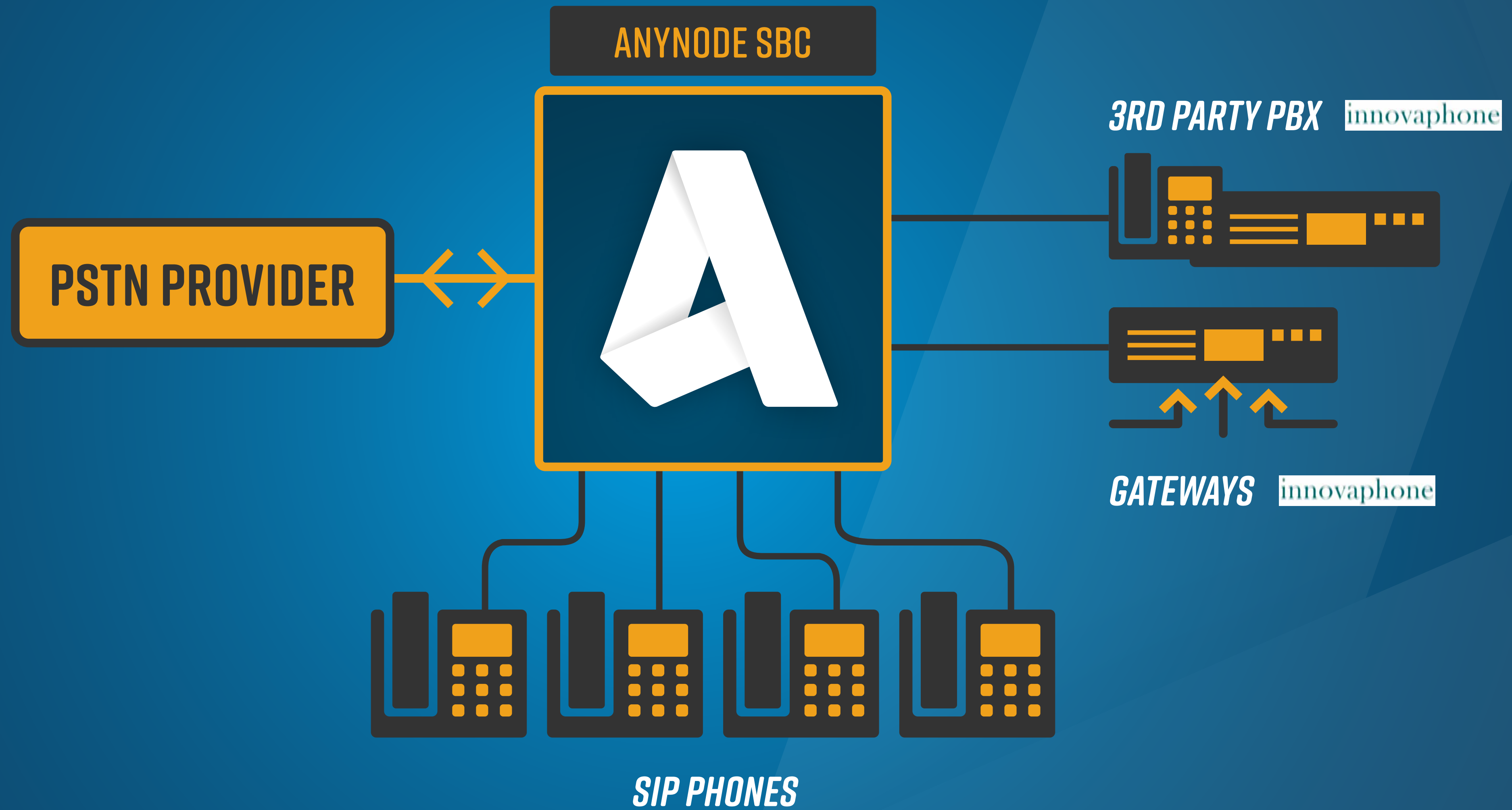
MICROSOFT TEAMS DIRECT ROUTING



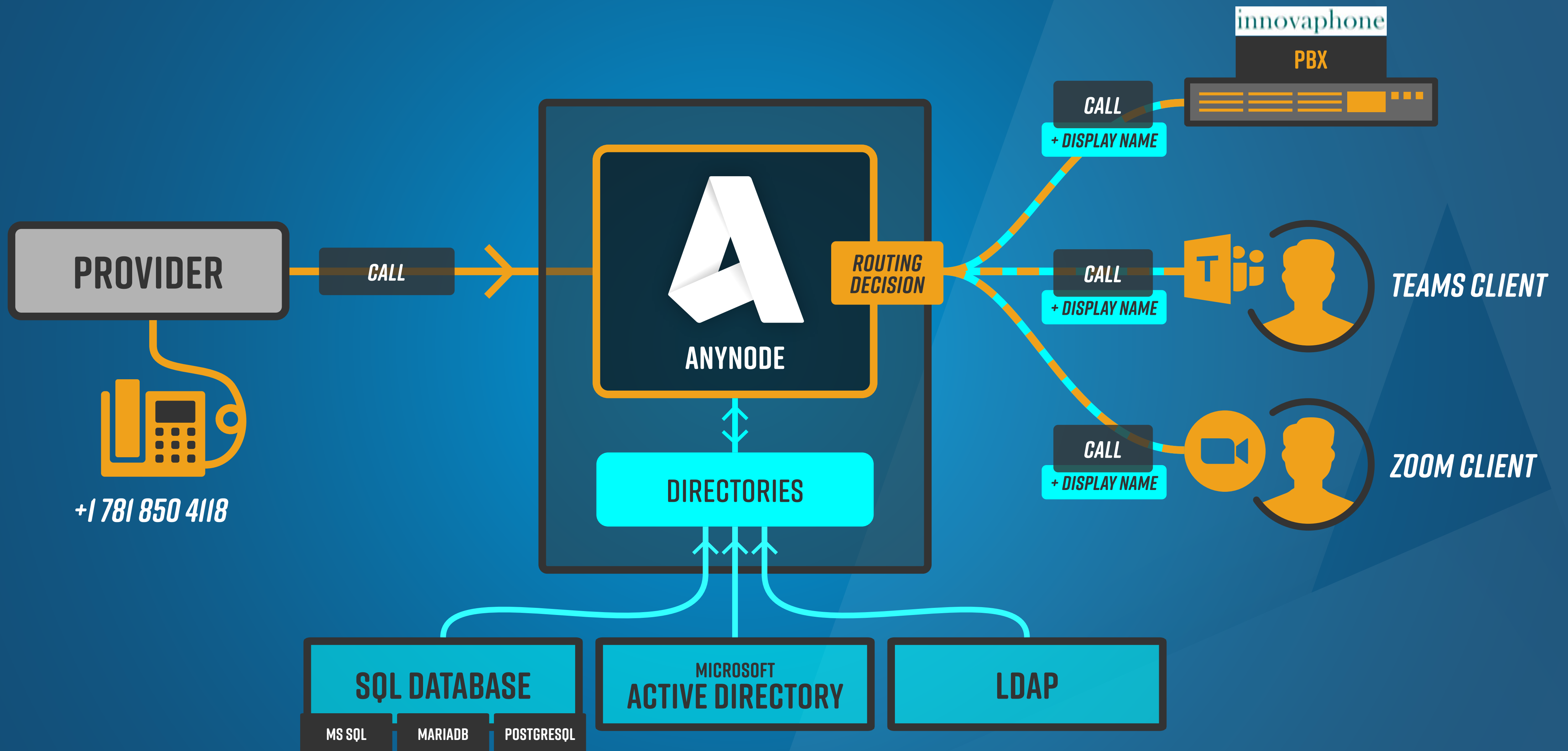
ZOOM PHONE BRING YOUR OWN CARRIER (BYOC)



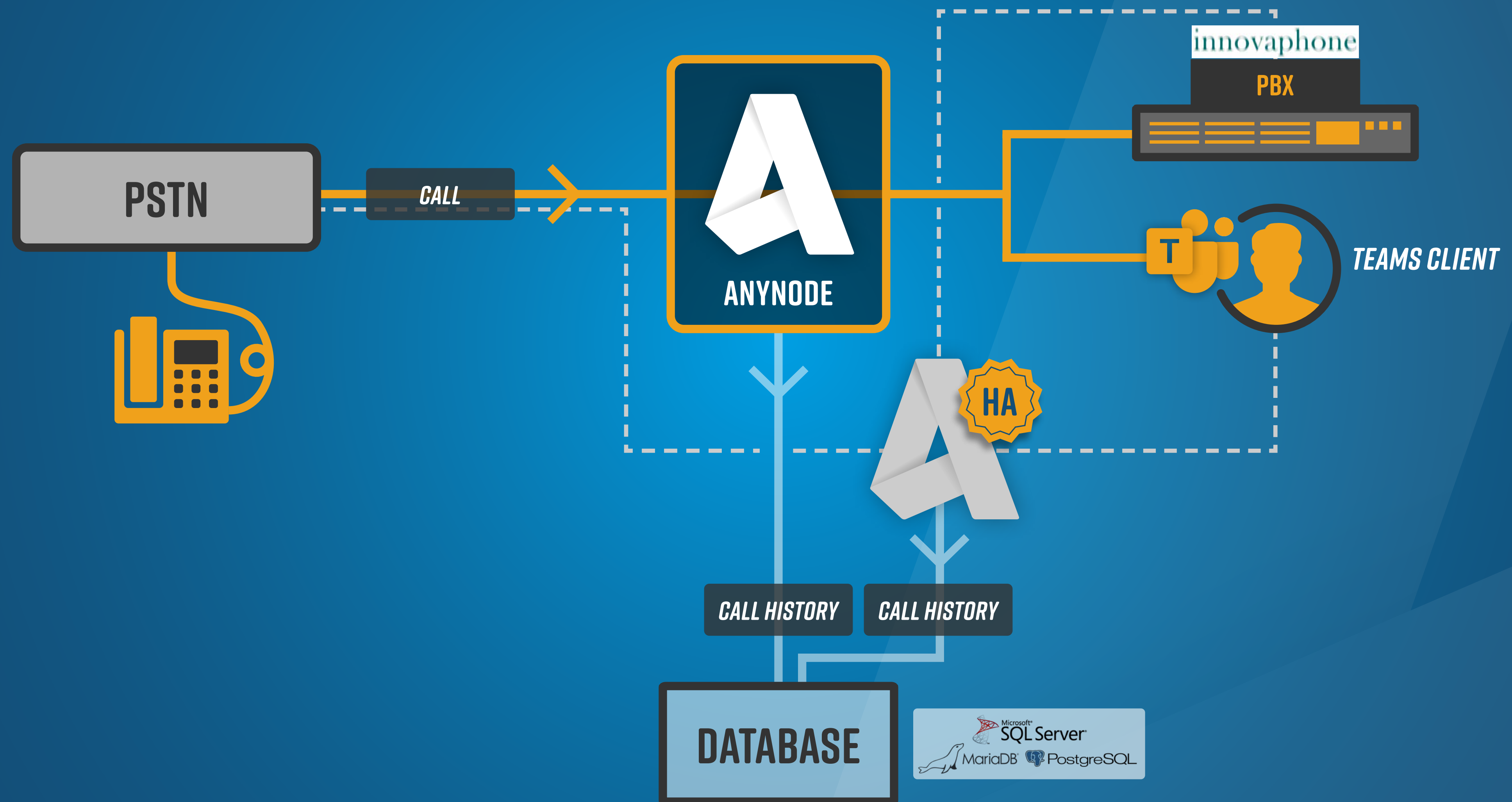
SIP REGISTRAR / SIP PHONE, PBX, GATEWAY INTEGRATION



REVERSE NUMBER LOOKUP (RNL)



CALL HISTORY / EXTERNAL DATABASE / HA-VERSION WITH 2 SBPCS



CONFIG WIZARD

anynode offers an easy and intuitive web interface to handle configuration. Endpoint and routing definitions, as well as registration and security profiles, can be created, modified, deleted, and displayed. Support is provided by generating the endpoint through predefined manufacturer profiles, which enables easy, efficient interoperability. The Scenario Wizard offers easy to use methods to speed up frequently occurring configuration tasks.

The screenshot shows the anynode web interface. The top navigation bar includes 'Wizard', 'Configuration', 'Objects', 'My Account', 'Extras', and 'Info'. Below this is a secondary navigation bar with 'Add Routing Domain', 'Remove Routing Domain...', 'Clone Routing Domain...', and 'Export Routing Domain...'. The left sidebar has a tree view with 'Configuration' expanded to 'Routing Domains'. The main content area shows a table of routes with columns for 'Filters' and 'Establishment'. A 'Create new node' dialog is open in the foreground, showing a list of VoIP providers and a selection of 'Environment' and 'Provider'.

Routing Domain: Routing decisions can be configured here.

Node Interconnection Assistant:

Offers pre-configured system profiles of VoIP providers, PBX's, and other Voice over IP systems.

The Scenario Wizard dialog box is shown. It contains a list of assistants for configuration tasks. A diagram illustrates the setup: Microsoft Teams, anynode (The Software SBC), and a VoIP PBX. The text states: "This assistant aids you in creating a Microsoft Teams Direct Routing node, a VoIP provider node and a PBX or VoIP system node. All three new nodes will be interconnected by dial string routing." Buttons for 'Start' and 'Cancel' are visible at the bottom.

Scenario Wizard: It will take care of the significant portions of the configuration in a few simple steps.

The 'Create new node' dialog box is shown. It features a list of VoIP providers under the heading 'VoIP provider preset'. The list includes: Amazon Chime, autophone aut-trunk, B3networks, BroadConnect Telecom, Broadvoice SIP Trunking, BroadWorks, CenturyLink IQ® SIP Trunk, Cloudli, Colt VoIP Access, COMvergence, Deutsche Telefon (SIP Trunk), Deutsche Telekom (IP-basiert) (1TR114), Deutsche Telekom CompanyFlex SIP-Trunk (1TR119), Deutsche Telekom DeutschlandLAN Cloud PBX (secure), Deutsche Telekom DeutschlandLAN SIP-Trunk (1TR118), DOKOM21 SIP Trunk, and DSCI IPBX SIP Trunking. Navigation buttons for '< Previous', 'Next >', 'Finish', and 'Cancel' are at the bottom.

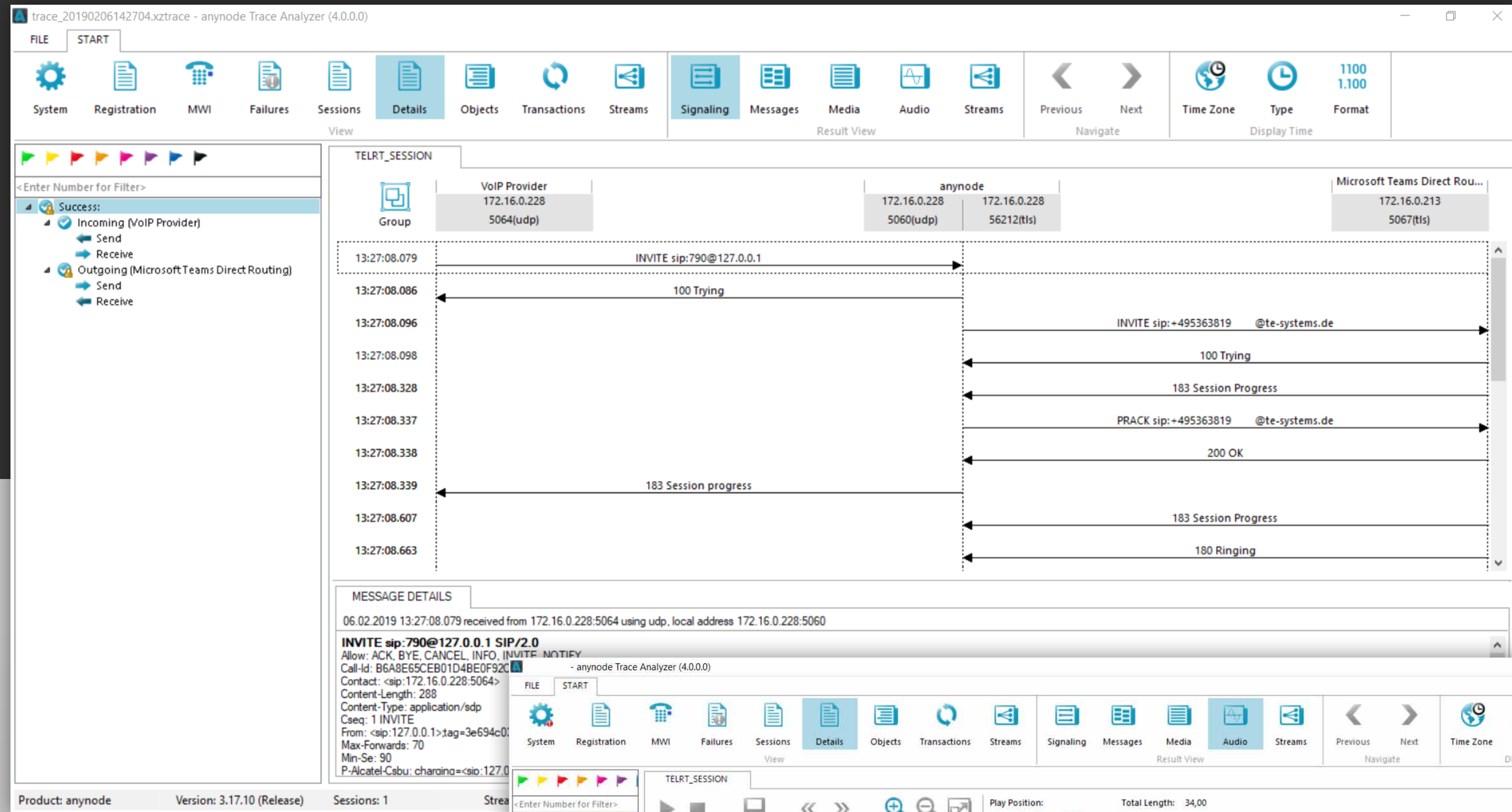
TRACE ANALYZER

The anynode Trace Analyzer is now one single tool that will be used by on-site engineers all the way to the core developers of anynode.

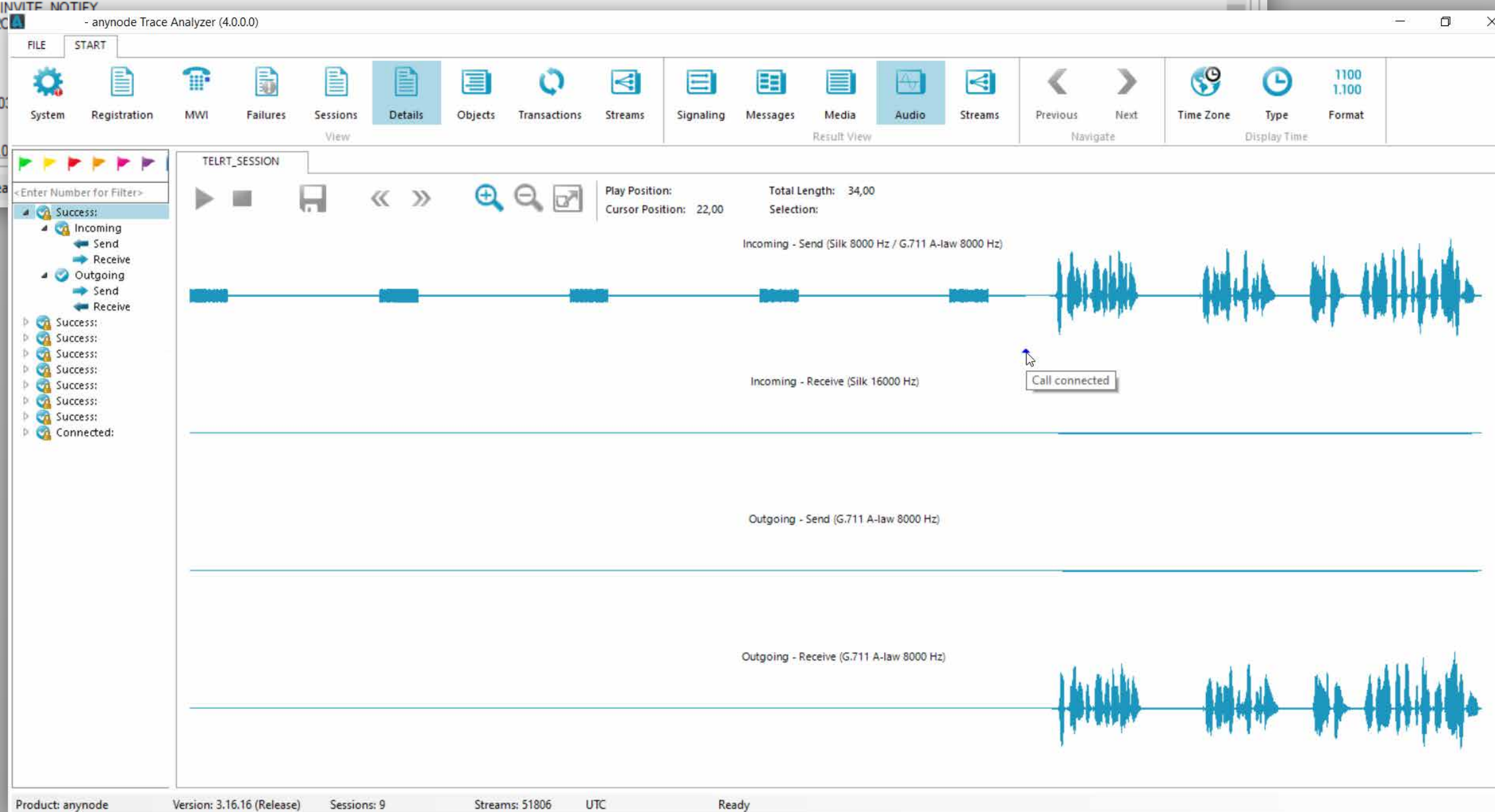
It integrates an overview of all traced sessions, a concise presentation of the SIP message flow of individual sessions, and an RTP stream view which shows details for combined or individual media-flow directions. Easy diagnostic tool for faster resolution.

BENEFITS

- + Ready-to-go tool available on every installation
- + Easy to use
- + Live tracing



Trace Analyzer 3-way signaling view: Allows more parties with more information to be displayed at the same time.



Trace Analyzer with a wave graph: Visual reference for the analysis. The time of the call connection when the call is accepted is visible via a marker.

MULTIPLE EVENT NOTIFICATIONS



EVENT
TRANSPORT

ANYNODE EVENT LIST

WINDOWS EVENT LOG

SIMPLE NETWORK MANAGEMENT PROTOCOL

WINDOWS MANAGEMENT INSTRUMENTATION

SIMPLE MAIL TRANSFER PROTOCOL

REST / HTTP

SYSLOG

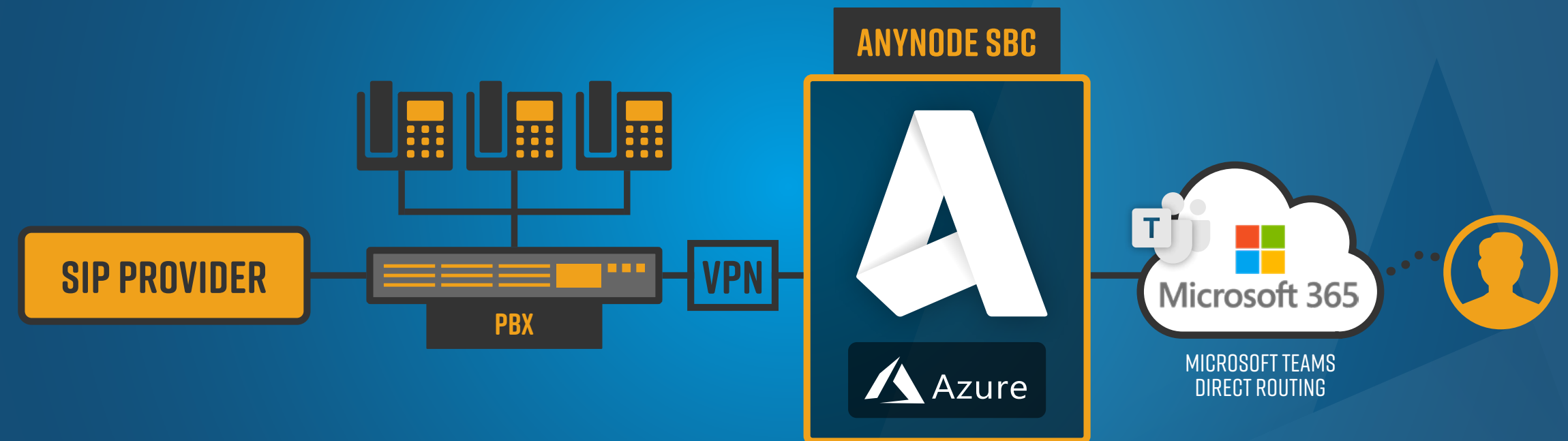
SQL SERVER

GET YOUR WORK CONNECTED

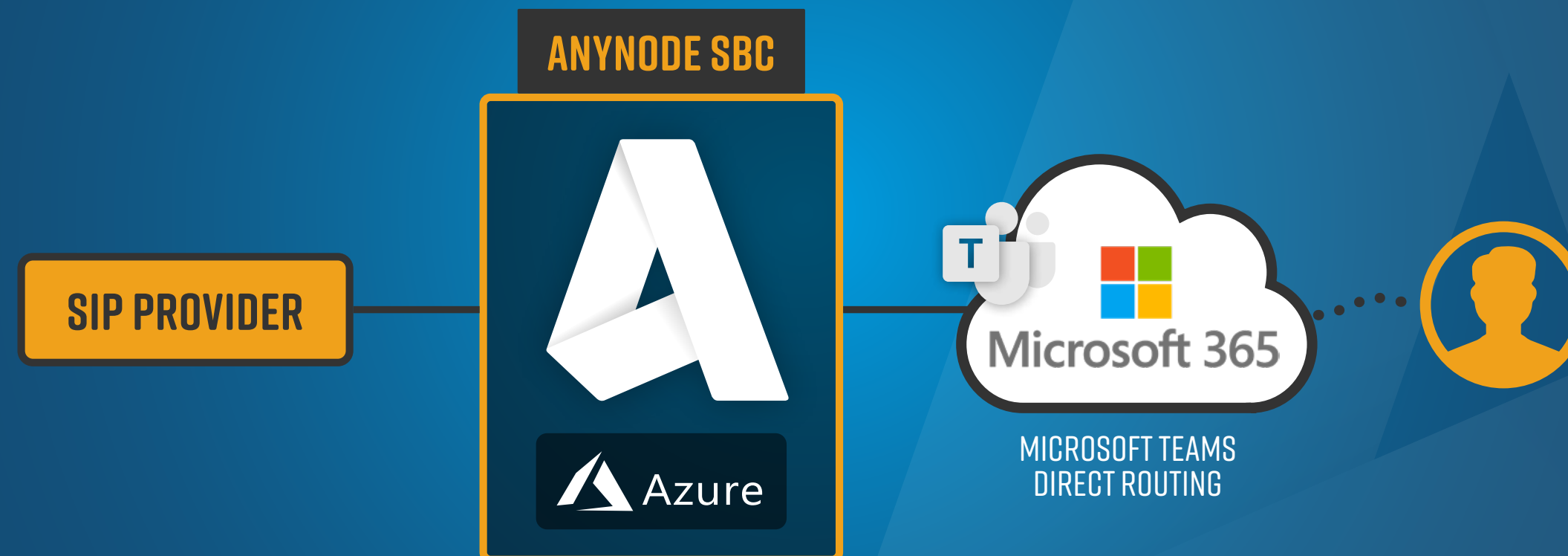
With Microsoft Direct Routing and anynode, you are able to connect to almost any telephony trunk or interconnect with third-party PBX. It's a suitable and uncomplicated, easy to use solution for you and your networks that simply works.

anynode is listed as "Preferred Solution" in the **Azure Marketplace** and thus tested by Microsoft experts for quality and functionality. Furthermore, anynode is also available at the **Amazon AWS Marketplace** for Windows and Linux Download.

DEPLOYING IN AZURE / PBX



DEPLOYING IN AZURE / SIP PROVIDER



GET YOUR
60 DAY
TRIAL

60-DAY-TRIAL

If you want to test anynode we offer a **60-day-trial** without obligation and restrictions. The trial provides a full-featured version of anynode that comes along with 10 sessions, config wizard and support by e-mail and phone.

It is available through our [website](#), e-mail or a call and can be quickly converted to a full version after testing without making any new installations or configurations.

PURCHASE-LICENSE

The anynode purchase license can be ordered by defining the number of sessions and – on request – the activation of the software upgrade service and it's run-time.

To do so, just get in touch with our anynode Product Partners. We will send you the LOD-key within minutes to enhance your trial/demo and to start right away with anynode.

SALES@TE-SYSTEMS.COM
WWW.ANYNODESBC.COM

SUBSCRIPTION LICENSE

With the monthly subscription, you tap into all the great features of anynode and stay up-to-date with the instant access to the latest versions, updates, and improvements of the Software Upgrade Service that is automatically included.

Respond quickly to changes call volumes with up to 2.000 sessions and improve your companies balance sheets by converting your expenditure costs into operating costs.

STAY UP-TO-DATE

Keep up with the fast pace technological changes, features, and enhancements. Enjoy these new features as they are added to anynode software updates that are regularly added and released in a new install package. With the subscription model, you get automatic and instant access to the latest product versions, updates, improvements, and bug fixes.

SECURITY

anynode is continually updated in order to cover always-changing security threats to ensure an optimal and secure operating environment. With an active, current subscription, you know that your company's network is protected.

SUPPORT

Benefit from our outstanding support from around the world provided via e-mail and telephone in case you run into any technical issues. We will help you to be successful any-time standing by you encounter a problem.

COST EFFECTIVE - STARTS AT US \$ 49

anynode is priced very competitively with all our licensing models. Technical support is at no extra cost, and the software update service (SUS), which allows you to upgrade to the latest versions of anynode, is included.

TE-SYSTEMS Inc.

38 Montvale Ave., Suite 360
Stoneham, MA 02180

United States

[google maps](#)

+ 1 (781) 850-4118

sales@te-systems.com

TE-SYSTEMS GmbH

Max-von-Laue Weg 19
38448 Wolfsburg

Germany

[google maps](#)

+49 5363 8195-0

sales@te-systems.de

Office Hamburg

Mittelweg 144
20148 Hamburg

Germany

[google maps](#)

+49 5363 8195-0

sales@te-systems.de

ANYNODESBC.COM

 [YouTube](#) [LinkedIn](#)